

MEDIA RELEASE - PHOTO STORY

DRAFT

For release: Monday 20 November

Inch Cape offshore substation fit-out kicks off at Wallsend yard

The fit-out of the offshore substation platform and jacket foundation for the 1.1 gigawatt (GW) Inch Cape Offshore Wind has now kicked off at the Smulders yard in Wallsend, Newcastle.

A consortium of Siemens Energy and Iemants, a Smulders subsidiary, is responsible for the delivery of the offshore substation for the Scottish project located 15 kilometres off the Angus coast. Siemens Energy is also responsible for the design and construction of the project's onshore substation in Cockenzie, East Lothian

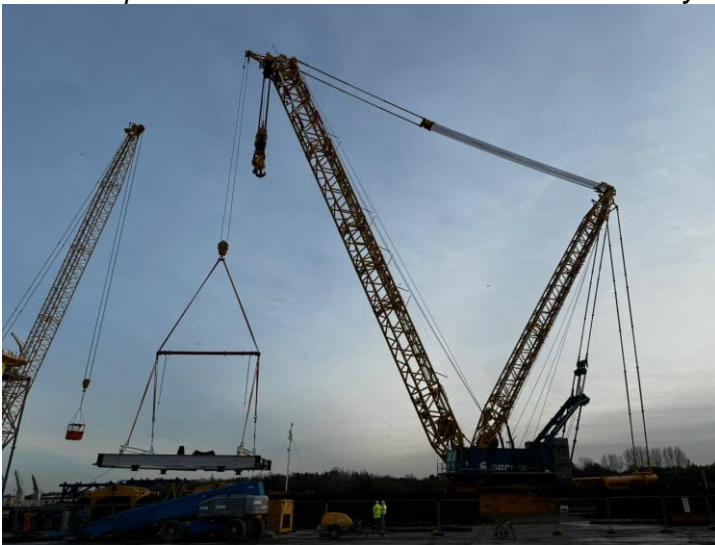
The work at the Wallsend yard will include the fit-out and assembly of the platform, which will use Siemens Energy's Offshore Transformer Module (OTM®) technology, and its jacket foundation.

A team of more than 250 local employees will work on the project which will take approximately 18 months to complete, before transportation by sea for installation at the wind farm site expected in 2025.

Work has already started on Inch Cape's 2.6 hectare onshore substation, located on the site of the former Cockenzie Power Station and in close proximity to the existing transmission network connection.

Inch Cape is owned by Inch Cape Offshore Wind Limited, a joint venture company held equally by Red Rock Power and ESB.

Photo: *Topside deck load-in at Smulders's Wallsend yard, Newcastle, UK*



Ends

For more information:

Sue Vincent, Inch Cape Stakeholder and Communications Manager, +44 7768508742.

Background for editors:

Owners:

ESB has been Ireland's foremost energy company since it was established in 1927, driven by an unwavering commitment to power society forward and deliver a net-zero future for our customers and the communities we serve.

Launched in 2022, its 'Driven to Make a Difference: Net Zero by 2040' strategy sets out a clear roadmap for ESB to achieve net-zero emissions by 2040. It also commits ESB to a science-based target for 2030 to provide assurance that we are decarbonising our operations at the necessary pace and scale.

As a strong, diversified utility, ESB operates across the electricity market, from generation through transmission and distribution, to supply of customers in addition to using our networks to carry fibre for telecommunications. ESB is a leading Irish utility with a regulated asset base of approximately EUR 12.0 billion (comprising ESB Networks at EUR 9.7 billion and NIE Networks at EUR 2.3 billion), a 30 % share of generation in the all-island market and supply businesses supplying electricity and gas to over two million customer accounts throughout the island of Ireland and Great Britain.

As at 31 December 2022, ESB Group employed over 8,000 people.

For more information visit: <https://esb.ie/>

Red Rock Power Limited – headquartered in Edinburgh, Scotland – is a developer, owner and operator of renewable energy projects. As well as Inch Cape, it owns or has interests in four other onshore and offshore wind farm projects across Scotland and in Sweden. The company is actively pursuing development and acquisition opportunities to grow its existing wind portfolio, as well as expanding into other European markets and sustainable energy sectors.

Red Rock Power Limited is a wholly-owned European subsidiary of SDIC Power Holdings Co. Ltd, based in Beijing. SDIC Power is listed on Shanghai and London Stock Exchanges and owns a total installed capacity of 37.7642 GW globally, almost 70% of which is generated from renewable energy projects. For more information visit www.redrockpower.co.uk.

Consortium:

Siemens Energy is one of the world's leading energy technology companies. The company works with its customers and partners on energy systems for the future, thus supporting the transition to a more sustainable world. With its portfolio of products, solutions and services, Siemens Energy covers almost the entire energy value chain – from power generation and transmission to storage. The portfolio includes conventional and renewable energy technology, such as gas and steam turbines, hybrid power plants operated with hydrogen, and power generators and transformers.



Its wind power subsidiary Siemens Gamesa Renewable Energy (SGRE) makes Siemens Energy a global market leader for renewable energies. An estimated one-sixth of the electricity generated worldwide is based on technologies from Siemens Energy. Siemens Energy employs around 94,000 people worldwide in more than 90 countries (including around 6,000 people in the UK&I) and generated revenue of €29 billion in fiscal year 2022.

www.siemens-energy.com

Smulders opened its production facility in Newcastle upon Tyne in 2016. This facility is mostly used for the production and assembly of foundations and substations for offshore wind farms. The yard has an ideal location next to the Tyne with a direct access to the North Sea. Smulders is an international steel construction company with more than 50 years' experience in the engineering, construction, supply and assembly of steel constructions. Smulders is involved in projects all over the world and is the market leader in Europe in terms of building the foundations and substations for offshore wind projects. Smulders operates across six strategic locations in Belgium, the Netherlands, the United Kingdom, and Poland, boasting a dedicated workforce of over 1,500 professionals.

www.smulders.com